

Technical Specification

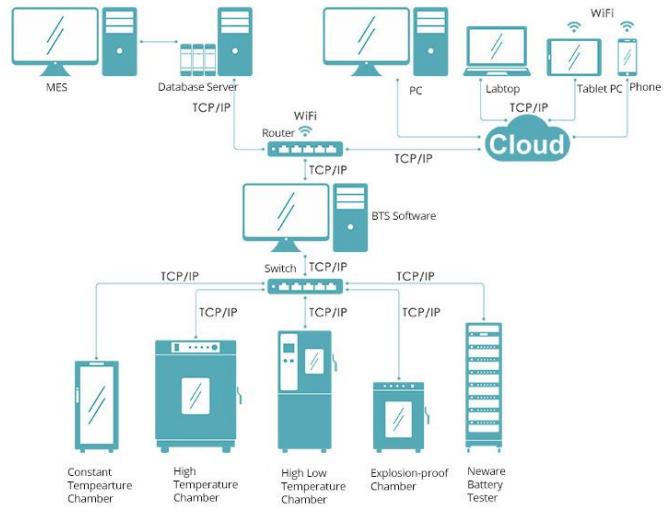
MHW-25-S-16CH

All-in-One Mini. Desktop Constant Temperature Chamber integrated with Battery Test System

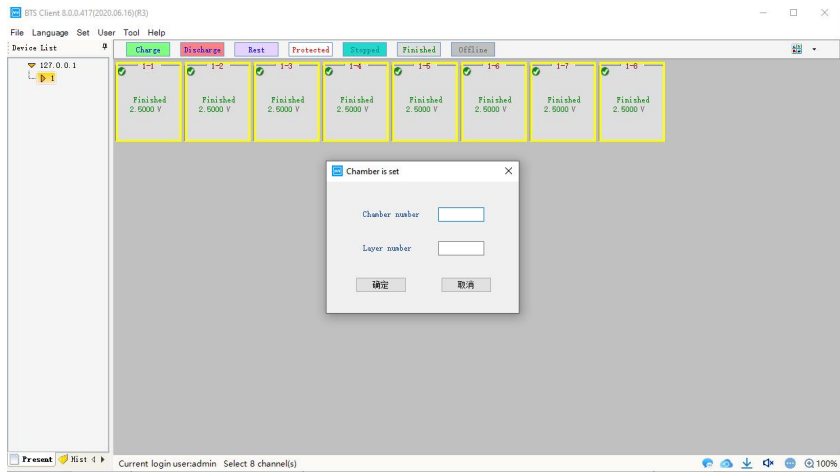
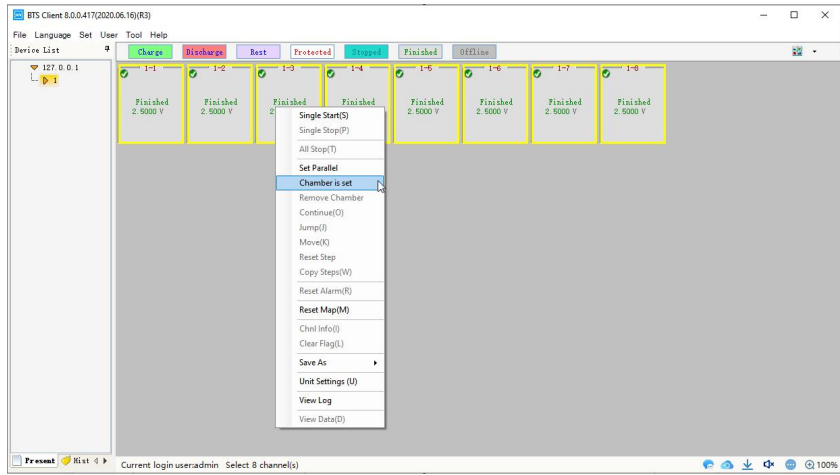
MHW-25-S-16CH	Constant Temperature Testing Chamber	
Model:MHW-25-S-16CH	Material Code: MHW-25-S-16CH	
Description	Product Specification	
AC Input	AC 220V±10% 50Hz (compatible AC110V±10% 60Hz) Single Phase+protective earth ground	
Power	0.2KW	
Input Current	1A (220VAC)/ 2A (110VAC)	
Volume, Size		
Standard Volume	25L	
Inner Size	W360mm×D300mm×H235mm	
External Size	W440mm×D580mm×H410mm	
Weight	About 45kg	
Performance		
Operating environment	Operating Temperature is +25℃、Relative humidity≤85%、Under no samples situation	
Temperature Range	15~60℃	
Temperature fluctuation	≤1℃ (no load、temperature stability)	
Temperature deviation	±2.0℃ (no load、temperature stability)	
Rise time	25℃→60℃ ≤40 min (No load)	
Cooling time	25℃→15℃ ≤60 min (No load)	
Structure features		
Thermal insulation maintenance structure	Extern materials:High quality cold rolled steel plate,Surface spray and baking paint treatment Inner materials:Stainless steel plate SUS304 Chamber insulation materials:PU Foaming	
Control panel	Control panel touch control button	
Cooling/ Heating method	Semiconductor, DC FAN	
Configuration	Door: Insulating Stalinite LED Light Cell holder board	
Electrical System	Controller: LED HMI Setting Mode: Touch Screen Control Type: Forced Circulation Ventilation Communicate Type: Ethernet	
Connecting with Neware battery system		
Hardware	With RS485 port	

Technical Specification

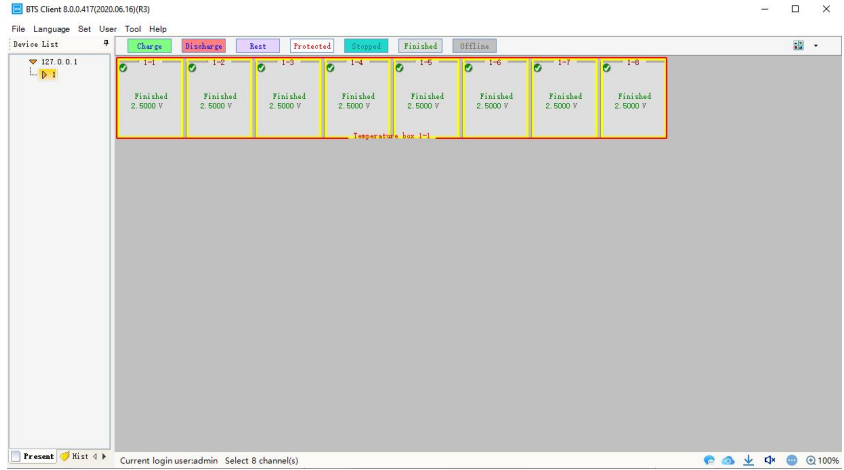
Connection Diagram



Software



Technical Specification



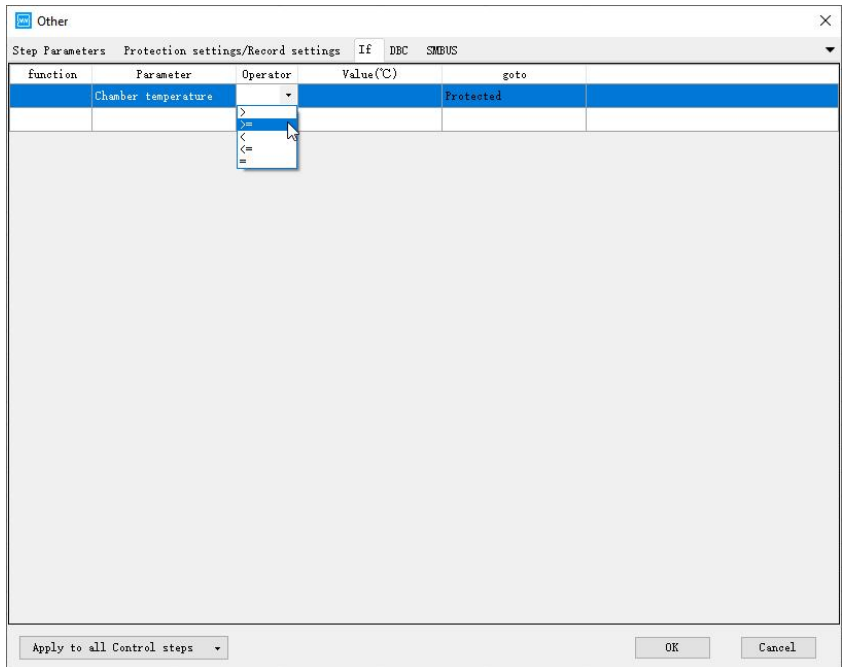
Step ID	Step Name	Step Time(hh:mm:ss:ms)	Voltage(V)	Current(A)	Cut-off Curr(A)	Capacity(Ah)
1	Control					
2	End					

Control Type

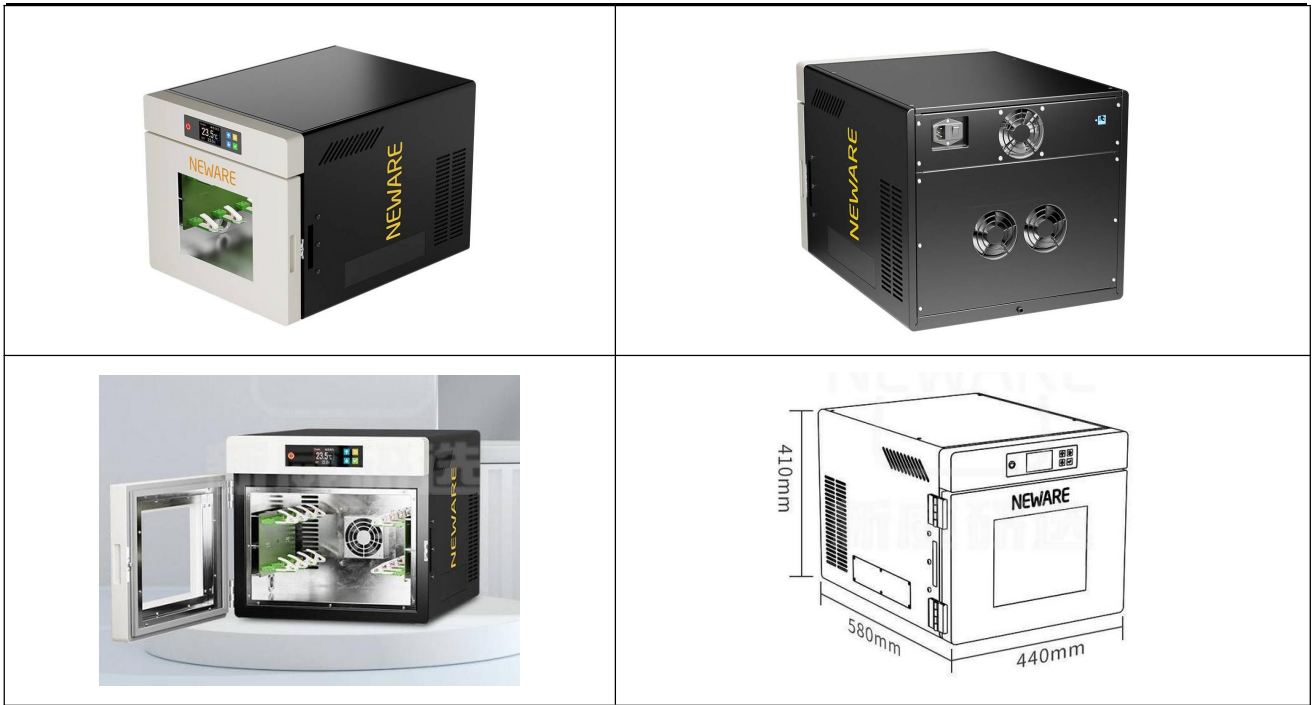
Control Type: Temperature control

Temperature control (C): 80

OK Cancel



Technical Specification



Picture for reference, please confirm the actual product

Different Range of Neware cycler will be integrated in chamber.

5V10mA / 5V20mA/ 5V50mA optional.

(Maximum 16 channels)

5V10mA	Range1: 5 μ A~1mA; Range2: 1mA~5mA; Range3: 5mA~10mA
5V20mA	Range1: 5 μ A~1mA; Range2: 1mA~10mA; Range3: 10mA~20mA
5V50mA	Range1: 5 μ A~1mA; Range2: 1mA~25mA; Range3: 25mA~50mA

Special coin cell holder with PCB board