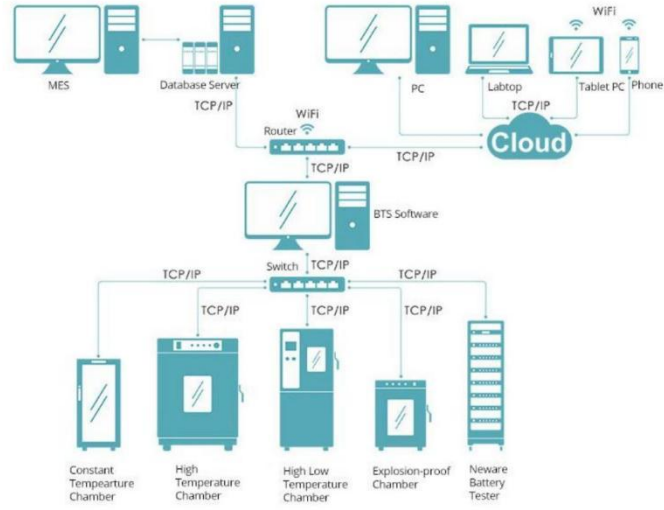
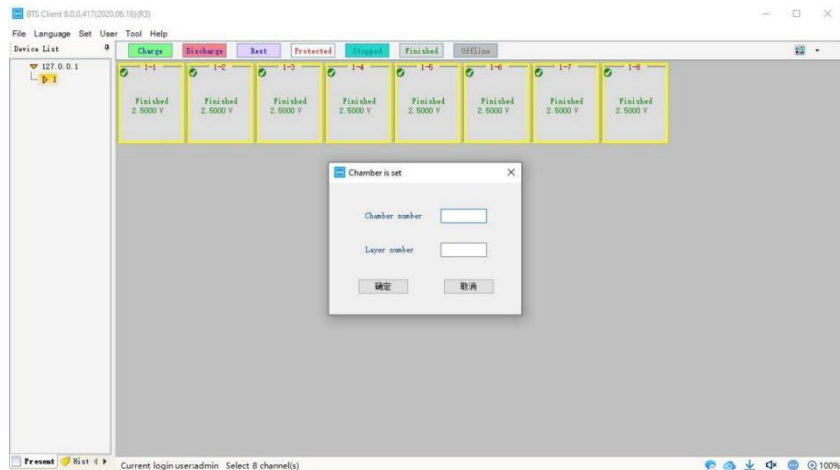
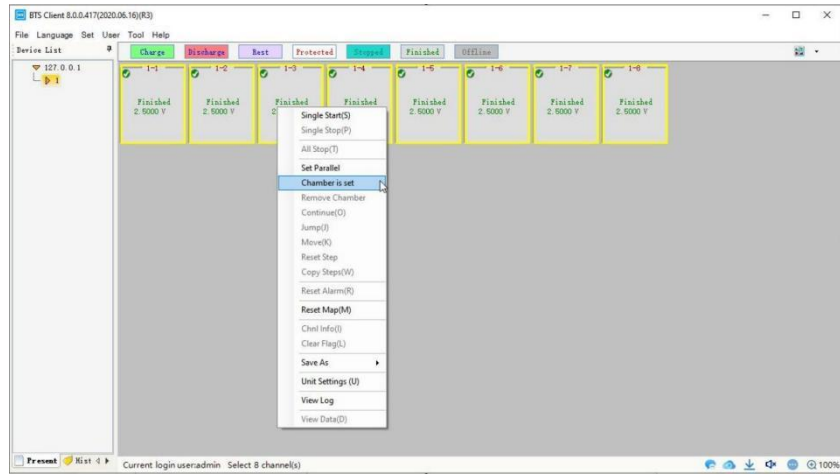


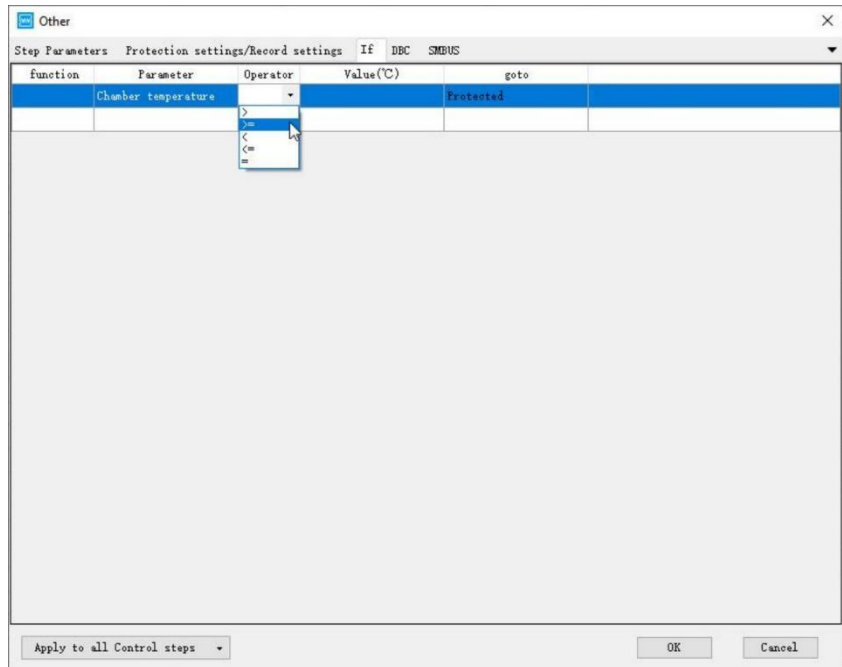
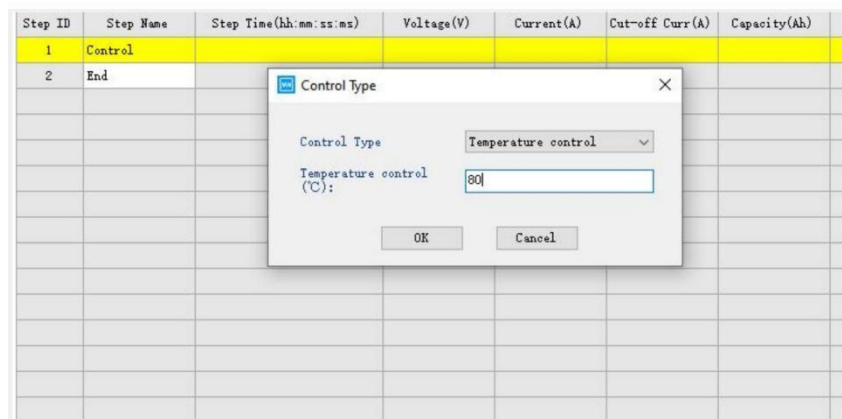
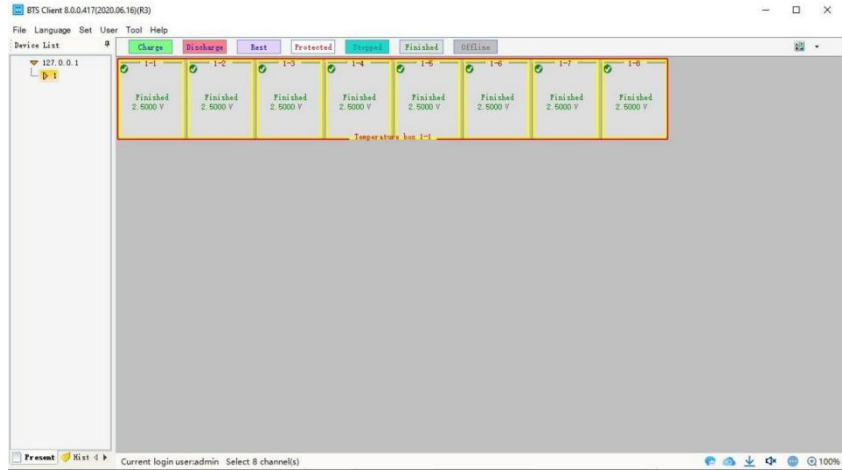
Mini All-in-One Testing System	
1. Material Code	MHW-25-S-16CH
2. Description	Product Specification
3. AC Input	AC 220V±10% 50Hz (compatible AC110V±10% 60Hz) Single Phase+protective earth ground
4. Power	0.2KW
5. Input Current	1A(220VAC)/2A (110VAC)
6. Volume & Size	
6.1 Standard Volume	25L
6.2 Inner Size	W360mm×D300mm×H235mm
6.3 External Size	W440mm×D580mm×H410mm
7. Weight	About 45kg
8. Performance	
8.1 Operating environment	Operating Temperature is +25°C、Relative humidity≤85%、Under no samples situation
8.2 Temperature Range	15~60°C
8.3 Temperature fluctuation	≤1°C (no load、temperature stability)
8.4 Temperature deviation	±2.0°C (no load、temperature stability)
8.5 Rise time	25°C~60°C ≤40 min(No load)
8.6 Cooling time	25°C~15°C ≤60 min (No load)
9. Structure features	
9.1 Thermal insulation main tenance structure	Extern materials:High quality cold rolled steel plate,Surface spray and baking paint treatment Inner materials:Stainless steel plateSUS304 Chamber insulation materials:PU Foaming
9.2 Control panel	Control panel touch control button
9.3 Cooling/Heating method	Semiconductor, DC FAN
9.4 Configuration	Door: Insulating Stalinite LED Light Cell holder board
9.5 Electrical System	Controller: LED HMI Setting Mode: TouchScreen Control Type: Forced Circulation Ventilation Communicate Type: Ethernet
10. Connecting with Neware battery system	
10.1 Hardware	With RS485port

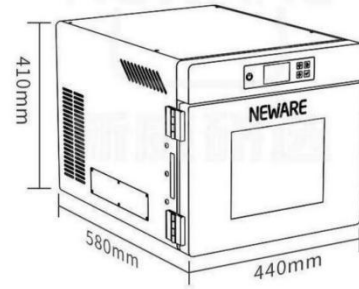
10.2 Connection Diagram



10.3 Software







Picture for reference, please confirm the actual product

Different Range of Neware cycler will be integrated in chamber.

5V10mA/ 5V20mA/ 5V50mA optional.

(Maximum 16 channels)

5V10mA	Range1: 5 μ A~1mA; Range2: 1mA~5mA; Range3: 5mA~10mA
5V20mA	Range1: 5 μ A~1mA; Range2: 1mA~10mA; Range3: 10mA~20mA
5V50mA	Range1: 5 μ A~1mA; Range2: 1mA~25mA; Range3: 25mA~50mA

Special coin cell holder with PCB board